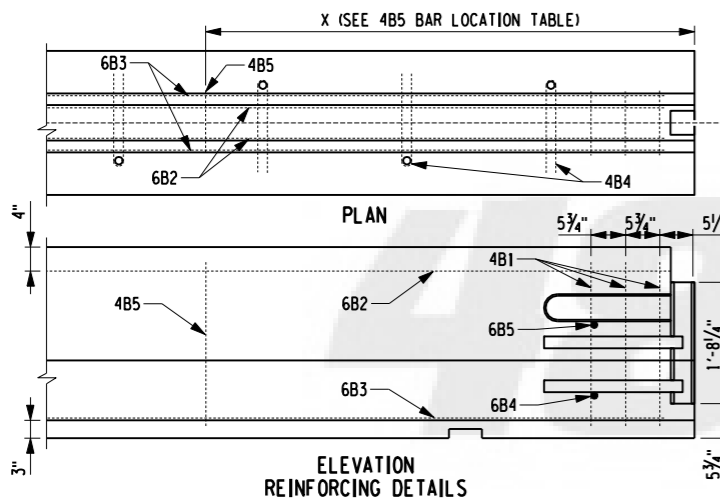


NOTES:

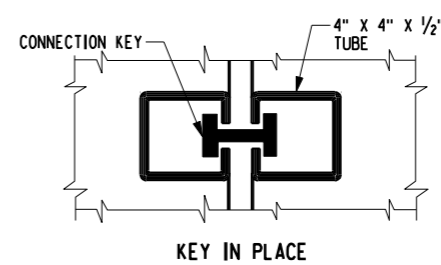
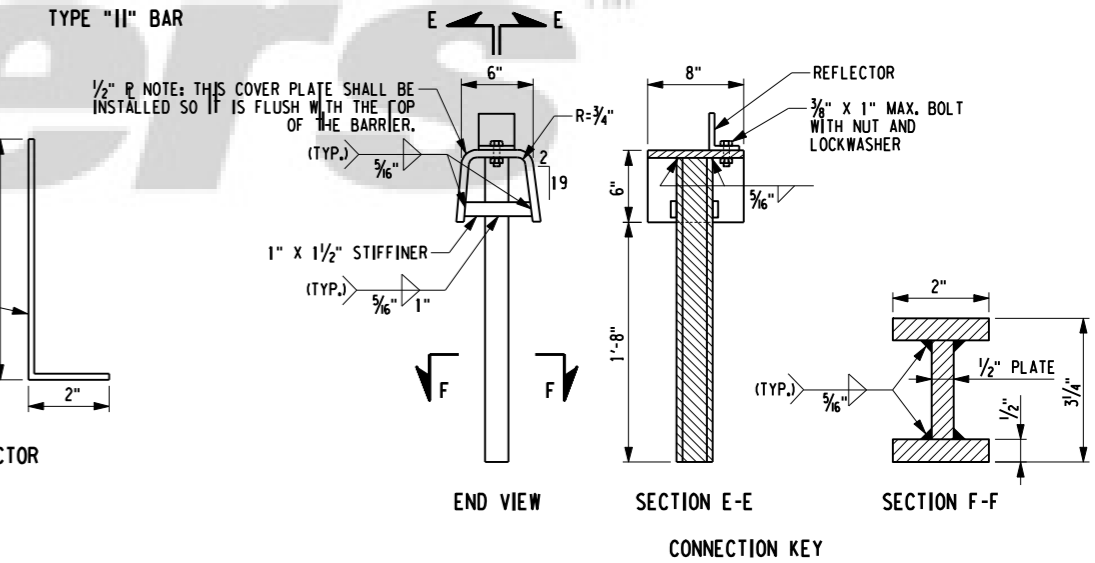
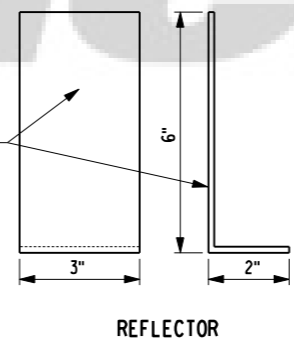
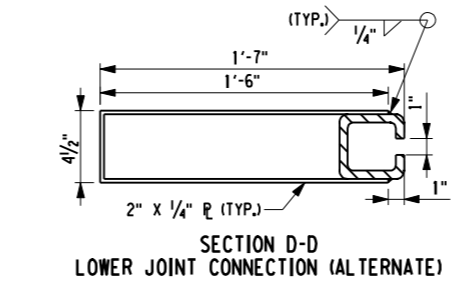
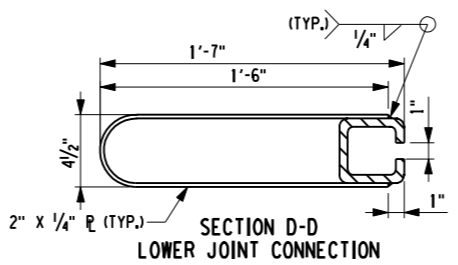
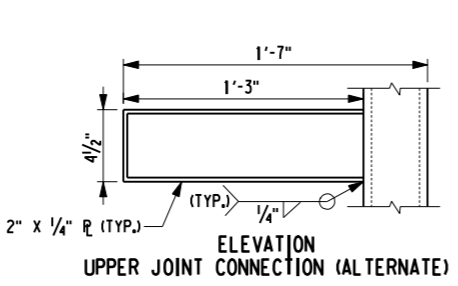
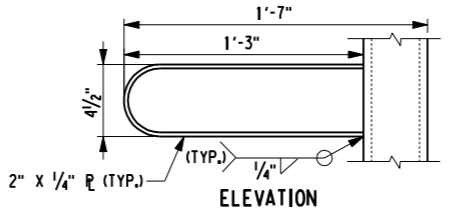
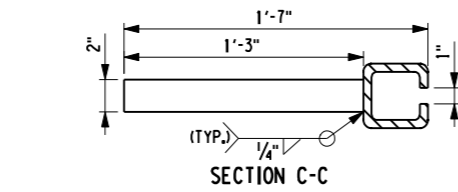
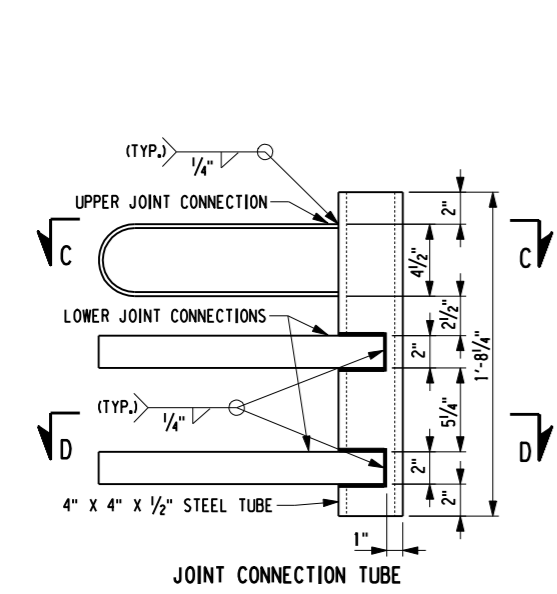
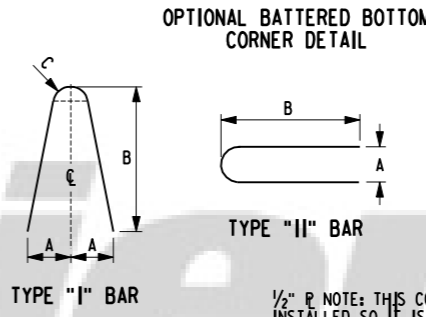
- TEMPORARY CONCRETE BARRIER SHALL BE PRECAST IN ACCORDANCE WITH THE REQUIREMENTS OF §704-05 PRECAST CONCRETE BARRIER.
- TEMPORARY CONCRETE BARRIER SHALL BE PRECAST UNITS OF ONE OF THE FOLLOWING NOMINAL LENGTHS 8', 10', 12', 14', 16', 18', 20'.
- STEEL PLATE REINFORCEMENT SHALL BE ASTM A36M, A572M, GRADE 345 STEEL, TUBE REINFORCEMENT SHALL BE ASTM A500, GRADE B OR C, AND REINFORCING BARS SHALL BE #4, #5, GRADE 420. EPOXY BARS ARE NOT REQUIRED.
- ALL WELDING SHALL BE PERFORMED BY A WELDER QUALIFIED IN ACCORDANCE WITH SECTION 8 OF THE NYS STEEL CONSTRUCTION MANUAL.
- SURFACES TO BE WELDED SHALL BE FREE OF SLAG, RUST, MOISTURE, GREASE OR ANY OTHER MATERIAL THAT WILL PREVENT PROPER WELDING OR PRODUCE OBJECTIONABLE FUMES.
- WELDING SHALL BE SHIELDED METAL ARC WELDING USING PROPERLY DRIED 5/32" E7018 ELECTRODES CONFORMING TO THE REQUIREMENTS OF SECTION 7 OF THE NYS STEEL CONSTRUCTION MANUAL.
- THE 6B2 AND 6B3 BARS SHALL BE 1'-0" SHORTER THAN THE NOMINAL LENGTH OF THE BARRIER SEGMENTS. THE NUMBER AND PLACEMENT OF THE 4B4 AND 4B5 BARS WILL VARY WITH THE LENGTH OF THE BARRIER SEGMENT.
- CONCRETE CLEAR COVER FOR REINFORCING BARS SHALL BE 1 1/2" (MIN.) UNLESS OTHERWISE SPECIFIED.
- A MINIMUM OF (2) TWO RECESSED LIFTING DEVICES, EACH WITH THE CAPACITY TO LIFT A MASS OF 6 TONS (MINIMUM), SHALL BE INSTALLED ON EACH SEGMENT. SEGMENT MASS IS APPROXIMATELY 400 LBS/FT.
- ONE DRAINAGE POCKET SHALL BE INCLUDED IN THE CENTER OF 8'-0" AND 10'-0" SEGMENTS, TWO DRAINAGE POCKETS IN ALL OTHER SEGMENTS.
- CONNECTION KEY COVER PLATE SHALL BE INSTALLED FLUSH WITH THE BARRIER TOP.
- 1" Ø ASTM A36M ANCHOR PINS SHALL BE PLACED IN FOUR ANCHOR HOLES OF EACH SEGMENT TO BE PINNED.
- BASED ON SEGMENT LENGTH AND MAXIMUM JOINT ROTATION, TEMPORARY CONCRETE BARRIER CAN ONLY BE INSTALLED TO THE FOLLOWING MINIMUM RADI: 8' - 92', 10' - 115', 12' - 138', 14' - 161', 16' - 184', 18' - 207', 20' - 230'.

FULL SECTION BAR LIST								
MARK	SIZE	NUMBER PER SECTION	LENGTH	TYPE	A	B	C	LOCATION
4B1	4	6	4'-11"	I	5"	28"	1"	STIRRUPS
4B4	4	SEE TABLE	3'-1"	II	4"	15 1/2"		ANCHOR RECESS HOOPS
4B5	4	1 PER RECESS	4'-11"	I	5"	28"	1"	STIRRUPS
6B2	6	2	SEE NOTE 7	STR.				LONGITUDINAL (TOP)
6B3	6	2	SEE NOTE 7	STR.				LONGITUDINAL (BOTTOM)
6B4	6	2	1'-2"	STR.				TRANSVERSE (BOTTOM)
6B5	6	2	6"	STR.				TRANSVERSE (TOP)



4B5 BAR LOCATION TABLE		
NOMINAL LENGTH OF BARRIER UNIT	X	NO. EACH SECTION
20'	6'-11"	2
18'	6'-5"	2
16'	5'-11"	2
14'	7'	1
12'	6'	1
10'	5'	1
8'	N/A	0

"X" DISTANCE FROM END OF BARRIER TO 4B5 BAR



FILE NAME = IP_PWP-d0109553\619-0101.dgn
 DATE/TIME = 06-NOV-2008 15:03
 USER = jturley

STATE OF NEW YORK DEPARTMENT OF TRANSPORTATION	
U.S. CUSTOMARY STANDARD SHEET	
TEMPORARY CONCRETE BARRIER (SHEET 1 OF 2)	
APPROVED OCTOBER 06, 2008	ISSUED UNDER EB 08-036
/s/ J. F. TYNAN, P.E. DEPUTY CHIEF ENGINEER (CONSTRUCTION)	619-01

EFFECTIVE DATE: 01/08/09